

## Palpebral vernal keratoconjunctivitis (VKC)

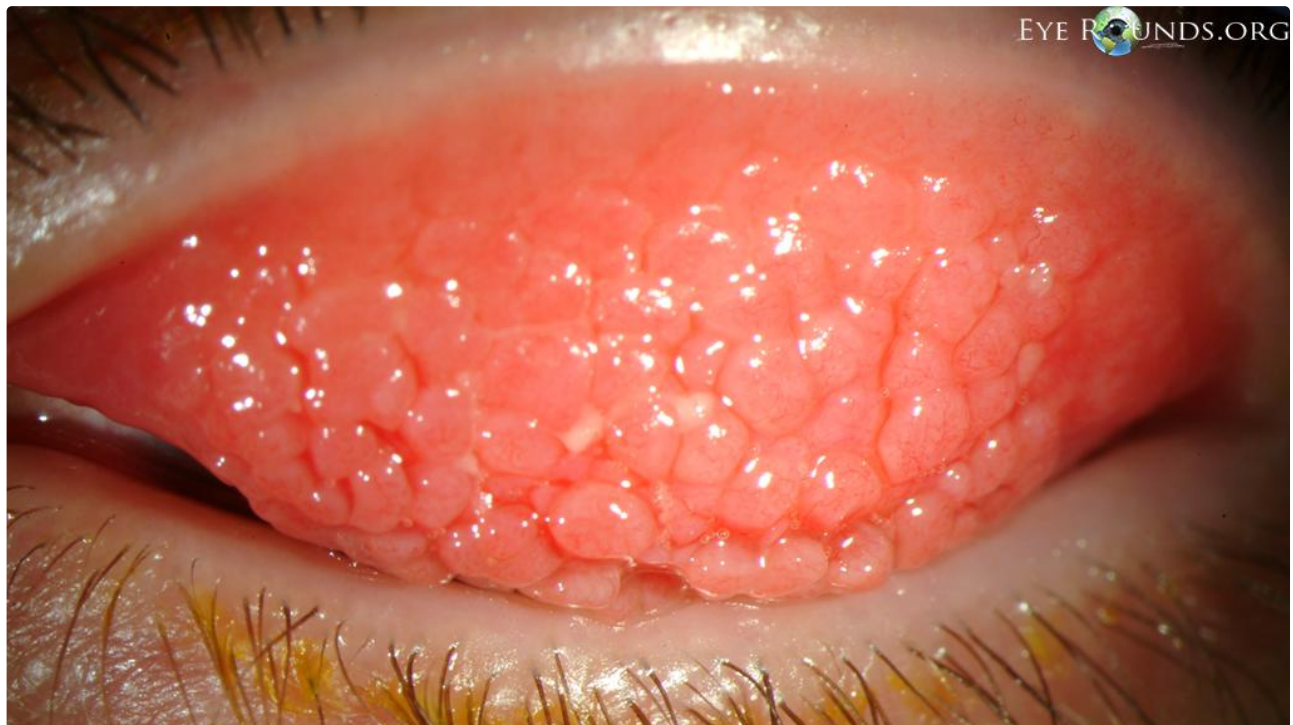
**Category(ies):** Cornea, External Disease

**Contributor:** [Jesse Vislisel, MD](#)

**Photographer:** Brice Critser, CRA

Vernal keratoconjunctivitis (VKC) is a seasonal disorder, predominantly seen in male children with a history of atopy. It results in inflammation of the cornea and conjunctiva.

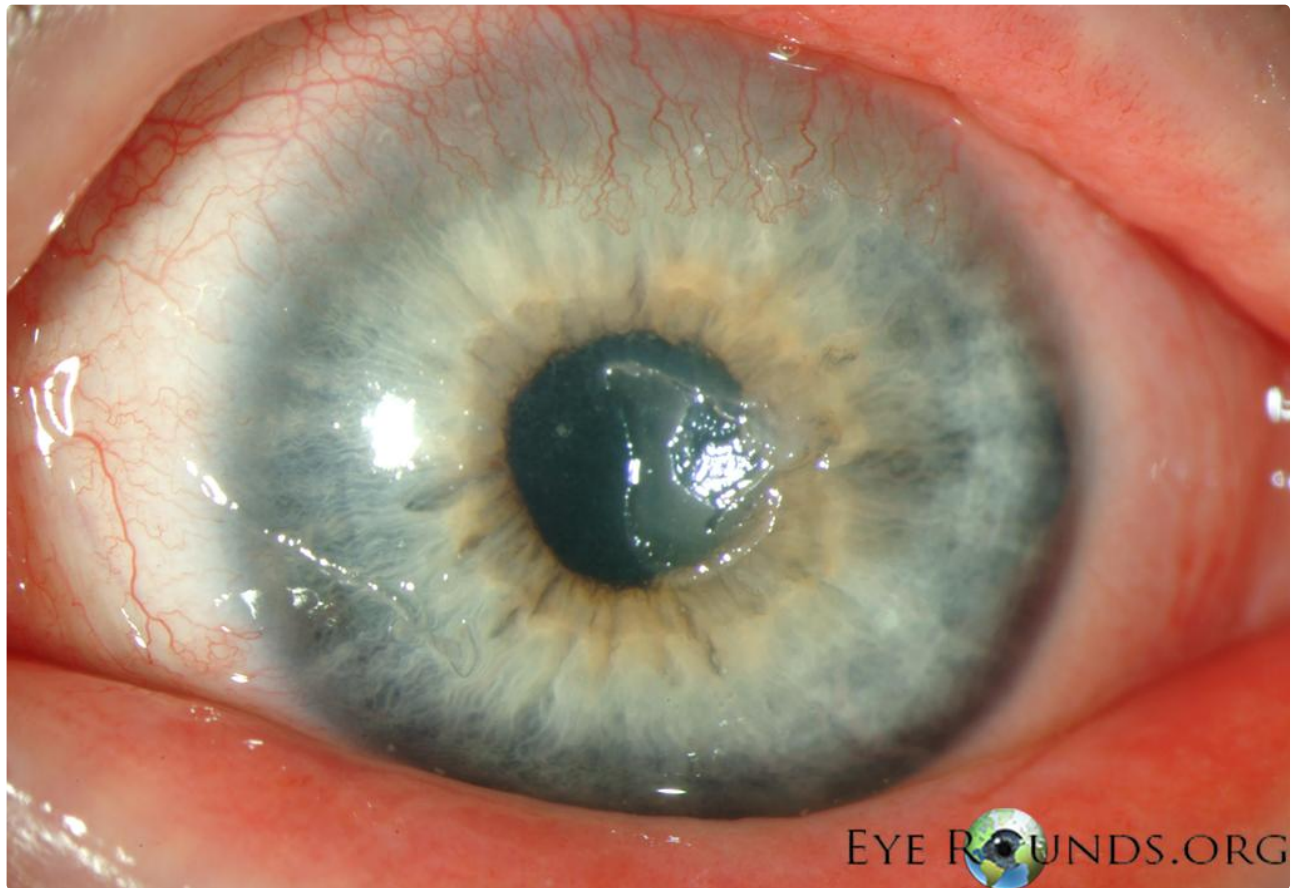
There are two subtypes of VKC, palpebral and [limbal](#). Palpebral VKC primarily involves the palpebral conjunctiva, resulting in diffuse papillary hypertrophy most prominent on the upper lid. In severe cases, as seen in the top photograph, cobblestone-like giant papillae can form on the upper tarsus. Corneal changes may be associated with the tarsal lesions including superior pannus and superior or central "shield ulcers," as seen in the bottom photograph.



Cobblestone-like giant papillae can form on the upper tarsus

[Enlarge](#)

[Download](#)



Corneal changes may be associated with the tarsal lesions including superior pannus and superior or central "shield ulcers"

[Enlarge](#)

[Download](#)

### Image Permissions:



Ophthalmic Atlas Images by [EyeRounds.org](http://EyeRounds.org), [The University of Iowa](http://The University of Iowa) are licensed under a [Creative Commons Attribution-NonCommercial-NoDerivs 3.0 Unported License](https://creativecommons.org/licenses/by-nc-nd/3.0/).



### Related Articles



[Related Atlas Entry: Limbal vernal keratoconjunctivitis \(VKC\)](#)



[Related Atlas Entry: Palpebral vernal conjunctivitis \(Older Image\)](#)

---

## Address

University of Iowa  
Roy J. and Lucille A. Carver College  
of Medicine  
Department of Ophthalmology and  
Visual Sciences  
200 Hawkins Drive  
Iowa City, IA 52242

[Support Us](#)

## Legal

Copyright © 2019 The University of  
Iowa. All Rights Reserved  
[Report an issue with this page](#)  
[Web Privacy Policy](#) |  
[Nondiscrimination Statement](#)

## Related Links

[Cataract Surgery for Greenhorns](#)  
[EyeTransillumination](#)  
[Gonioscopy.org](#)  
[Iowa Glaucoma Curriculum](#)  
[Iowa Wet Lab](#)  
[Patient Information](#)  
[Stone Rounds](#)  
[The Best Hits Bookshelf](#)

## EyeRounds Social Media

Follow



Receive notification of new cases,  
[sign up here](#)  
[Contact Us](#)  
[Submit a Suggestion](#)